

Education for Innovation Education of students who will promote innovation

# Social Innovation

Leader: Shuji Kondo ( Professor, School of Knowledge Science )

## Activities

### Establishment of an innovative human resource development program to promote regional innovation

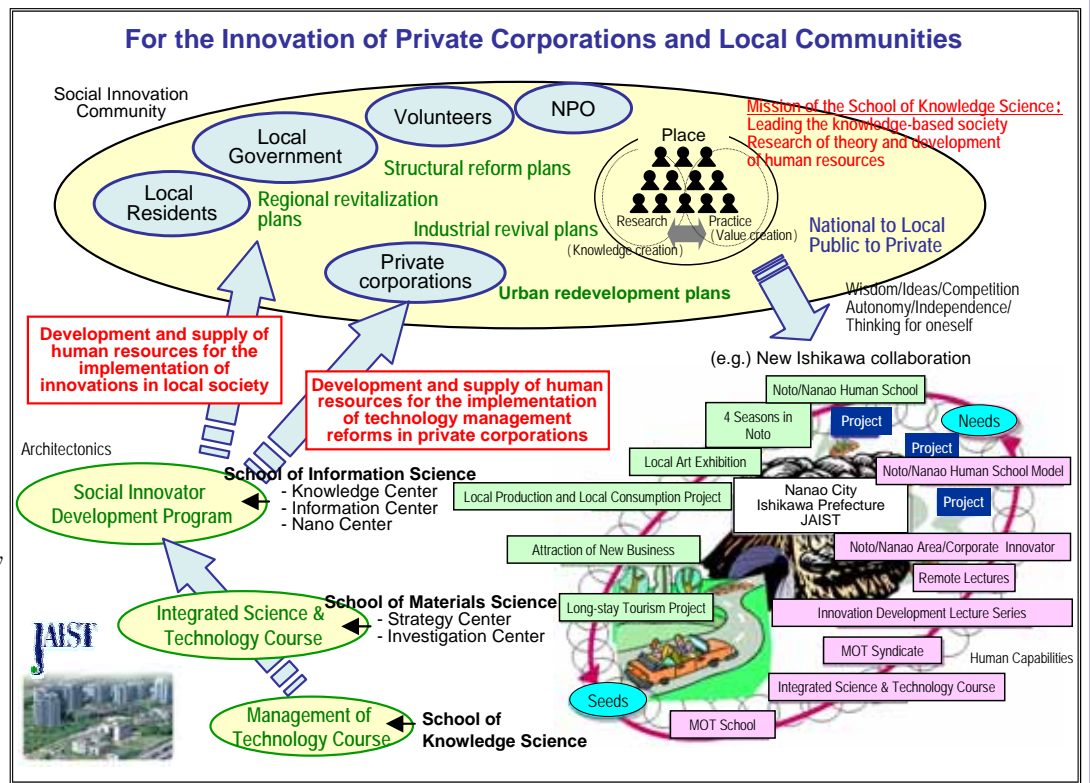
Sustainable regional development that is independent and self-reliant has been promoted in Japan, following the slogans *From National to Local* and *From Public to Private*. The government is hammering out policies, including "Support and promotion of competition in wise and innovative ideas" and "Respect of independent discretion." Under such circumstances, the development of human resources that can promote innovation is a task to be solved quickly in regions. Therefore, we at the School of Knowledge Science, the world's first graduate school in this field, attempt to cooperate with regional society, actively work on finding tasks requiring innovation, on the solving of problems through *knowledge creation*, and on the development of programs that will nurture *social innovators* to produce the innovation we seek to encourage.

#### [Program Characteristics]

- Care for value generation by knowledge creation
- The blending of human capabilities and technical capabilities
- Establishment of social innovation communities
- Implementation of the idea that everybody is a leading player
- Implementation of the 4-image thinking method – what I am, what I should be, what I want to be, and what I can be –

#### [Plan for 2006,2007]

- Begin a series of lectures on *Regional Revitalization System Theory* (July – November.)
- JAIST forum (November)
- Implement collaboration projects with local governments (Nomi City, Kaga City, Nanao City)



## Members

- Eiichi Tamiya ( Visiting Professor, School of Materials Science )
- Yoshiteru Nakamori ( Professor and Head, School of Knowledge Science )
- Toshiya Kobayashi ( Associate Professor, Center for Strategic Development of Science and Technology )
- Kazuyoshi Yamamoto ( Professor and Head, Center for Research and Investigation of Advanced Science and Technology )
- Masaru Ikariya ( Researcher, Venture Business Laboratory )
- Kei Iwasaki ( Part-time Lecturer, Integrated Science and Technology Course )
- Satoshi Suenaga ( Assistant, School of Knowledge Science )
- Kayano Chihara ( DC Doctoral Course Student, School of Knowledge Science )
- Haigang Song ( RA Doctoral Course Student, School of Knowledge Science ) ~ 9 / 2007