

## Evacuation route in case of fire **in the library**

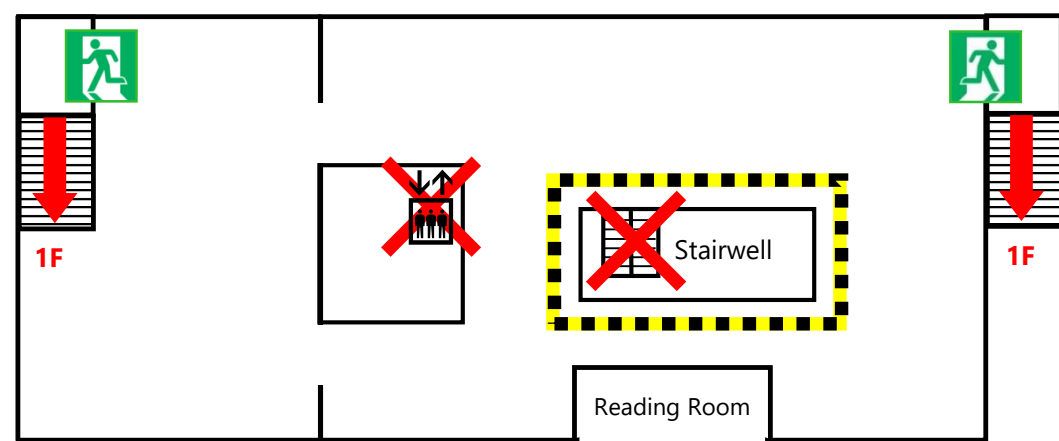
On hearing an emergency announcement for fire evacuation, **evacuate ASAP from the nearest exit.**

- \* Do not use the elevator to evacuate.
- \* Fire shutters will close. Please be careful.



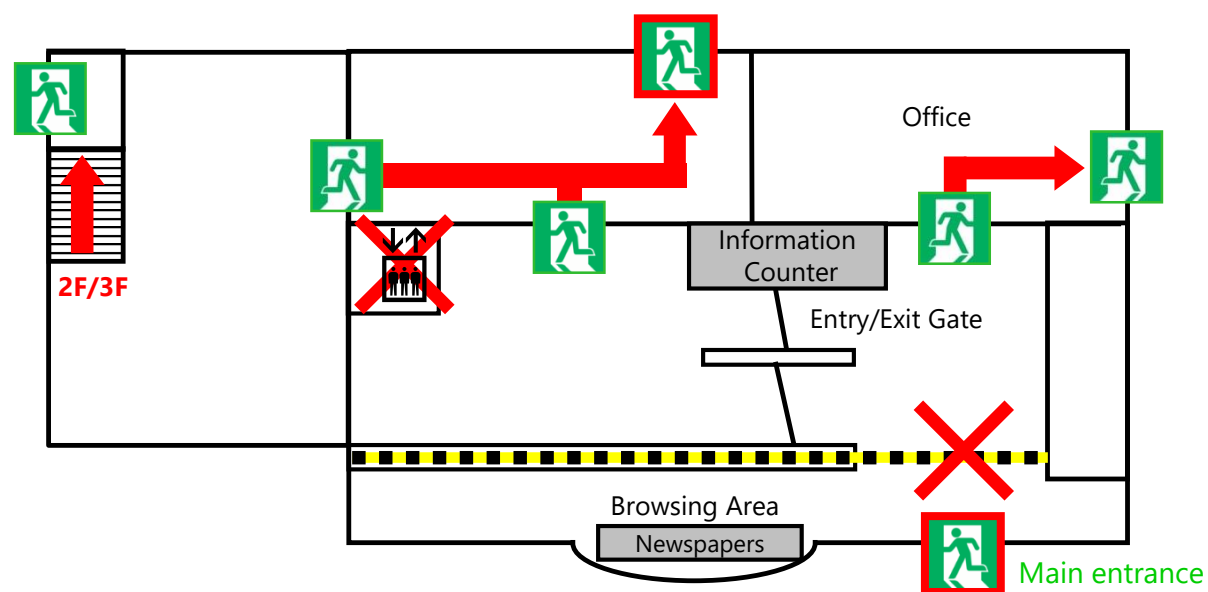
2F/3F

You cannot use stairs in stairwell to evacuate because fire shutters will close.



1F

You cannot use the main entrance to evacuate because fire shutters will close.



< **Emergency exits framed in red** >

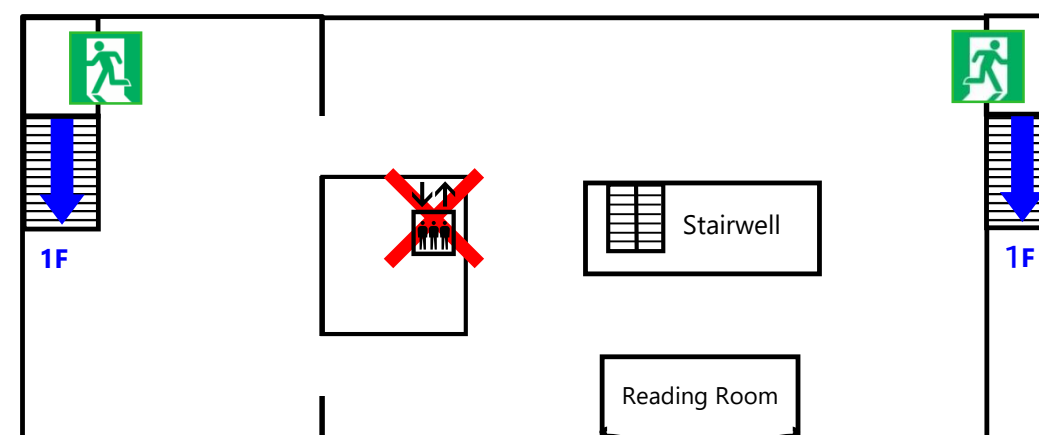
They are locked during nights and holidays. If the door is locked when you evacuate, please turn the internal lock to open it.

## Evacuation route in case of fire **outside the library**

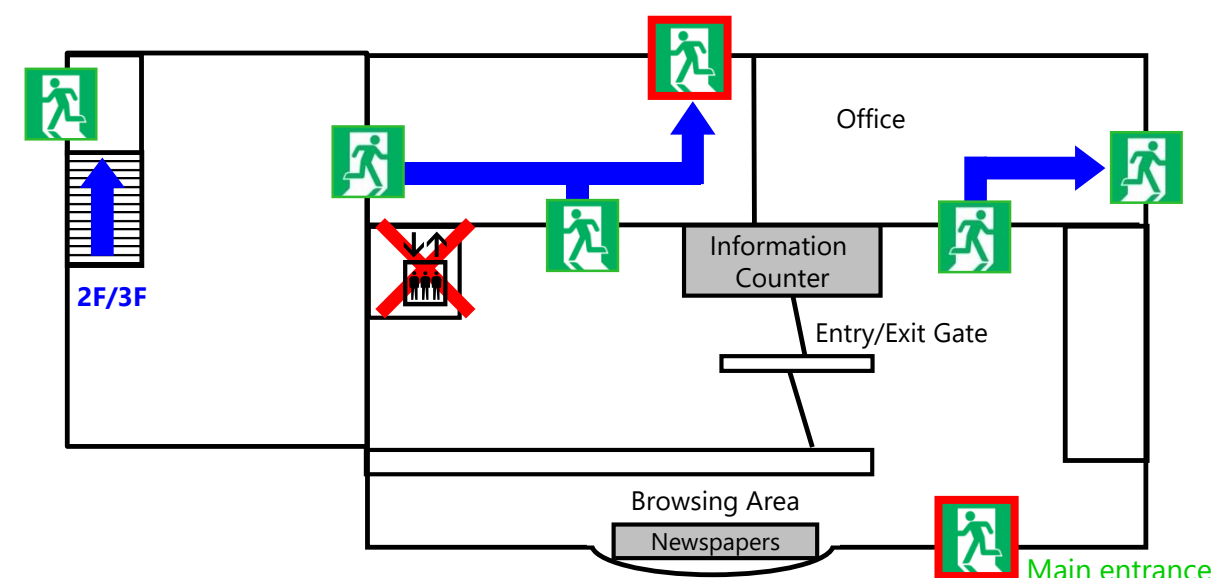
On hearing an emergency announcement for fire evacuation, **evacuate ASAP from the nearest exit.**

- \* Do NOT use the elevator to evacuate.
- \* The fire shutters will NOT close in case of a fire outside the library.

2F/3F



1F



< **Emergency exits framed in red** >

They are locked during nights and holidays. If the door is locked when you evacuate, please turn the internal lock to open it.