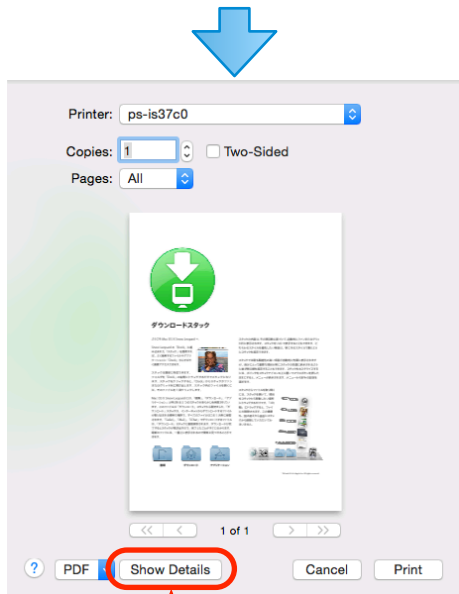


(1) Open print dialog from any applications.



(2) Show a detail dialog.

(3) Choose "Printer Features".

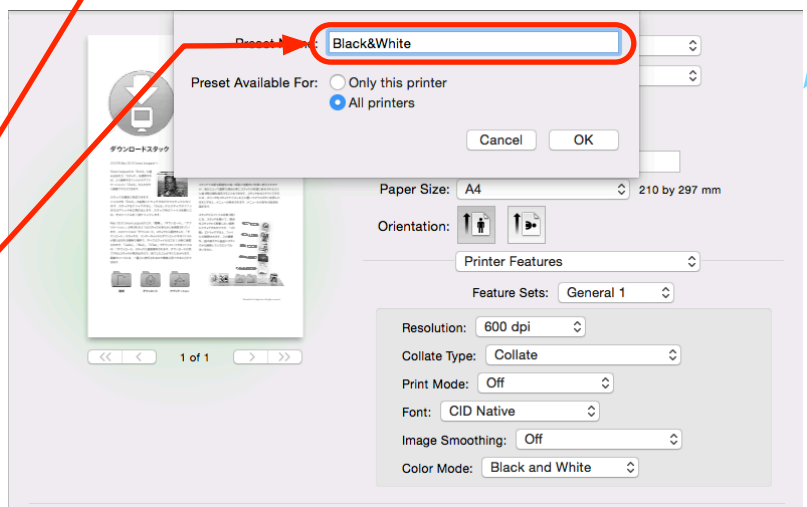
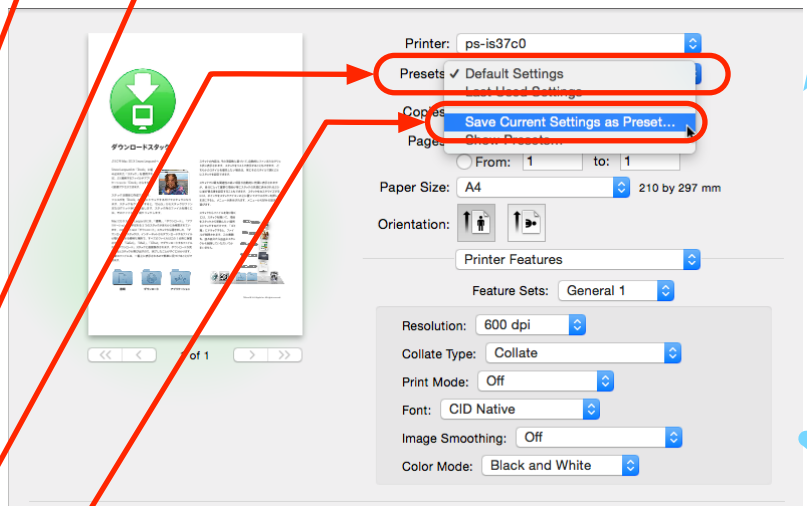
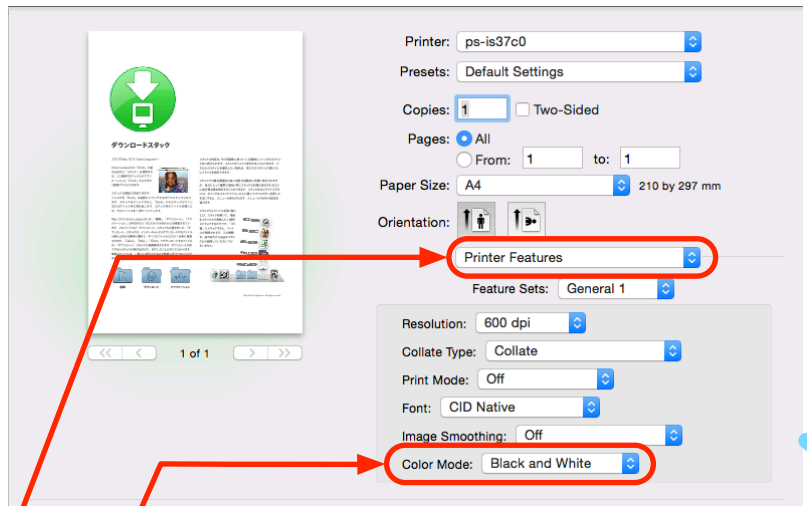
(4) Choose "Black and White" as Color Mode.

(5) Click "Preset".

(6) Choose "Save Current Settings as Preset..."

(7) Name the preset and save it. For example, "Black&White".

(8) The setting is completed.



When you print, choose the preset of monochrome setting e.g. "Black&White"

