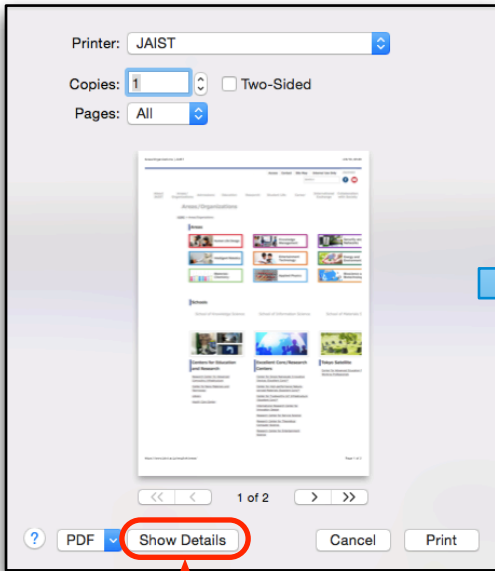


How to set “Black and White” as the default printing mode

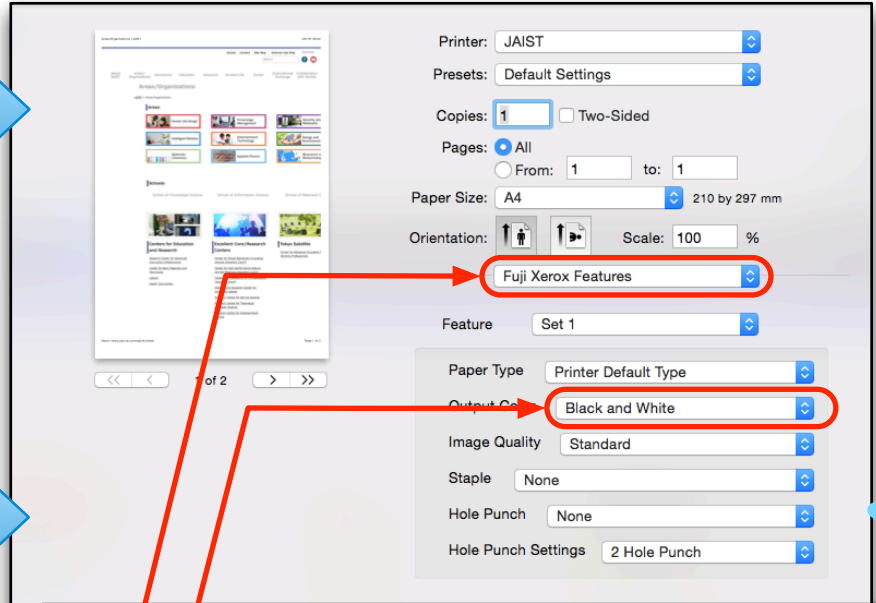
Step 1 Setting a printer for JAIST Printing Service. <https://www.jaist.ac.jp/iscenter/en/printing/system/>

Step 2

(1) Open print dialog from any applications.



(1a) Show a detail dialog.



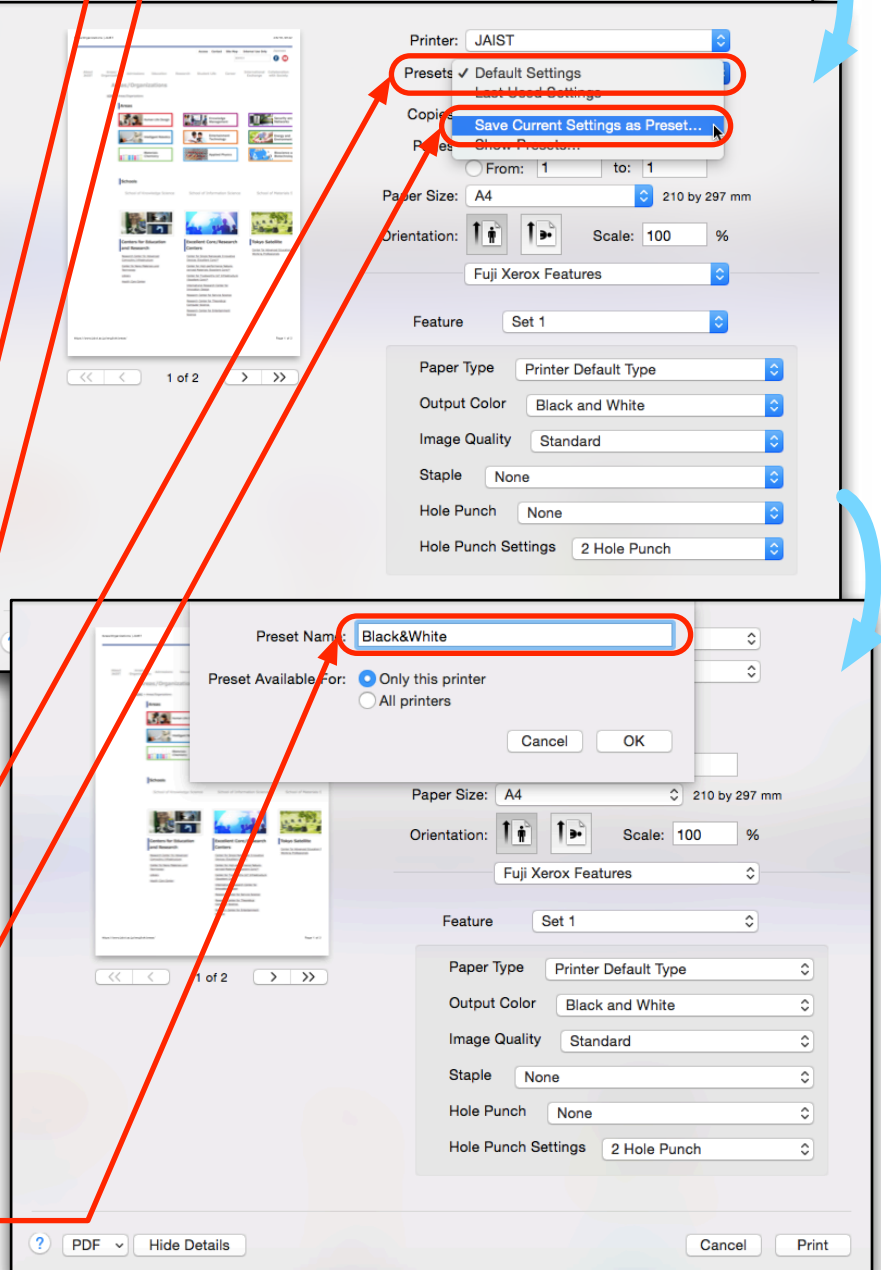
(2) Choose “Fuji Xerox Features”.

(3) Choose “Black and White” as Color Mode.

(4) Click “Preset”.

(5) Choose “Save Current Settings as Preset...”

(6) Name the preset and save it. For example, “Black&White”.



Step 3

When you print, choose the preset of monochrome setting e.g. "Black&White"

